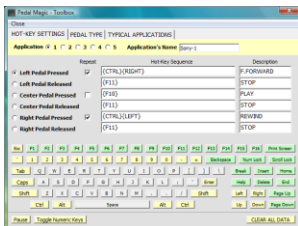




Technology by Apptec

# Foot Pedal to Hot-Key Application Controller



## QUICK START GUIDE

### NEED HELP?

If you have any questions about PedalMagic's use, installation, or upgrade, please contact your PedalMagic Reseller. If you need additional assistance you may also email [Support@DigiTelSoftware.com](mailto:Support@DigiTelSoftware.com) with your questions. Remote installation and setup support is also available upon request.

PedalMagic lets you control any application via Foot Pedal. Simply connect a compatible Foot Pedal (such as the Infinity IN-USB2, IN-USB1, or IN-DB9), install the Pedal's Driver, and set the desired Hot-Key sequence you want PedalMagic to send for each Pedal Press or Release. Then open the application you want to control, and simply press a Pedal to control it!

**This Quick Start Guide** briefly tells you how to install your PedalMagic software. More detailed installation, setup and usage instructions can be found in the **PedalMagic User Manual** which is available to view and download from the **Documentation** page at [www.DigiTelSoftware.com](http://www.DigiTelSoftware.com)

### PedalMagic Installation & Initial Setup:

1. **DOWNLOAD** the latest PedalMagic at [www.DigiTelSoftware.com](http://www.DigiTelSoftware.com) by clicking on **SOFTWARE** then **New Installation**. Then click on the version number under the PedalMagic heading and follow the on-screen instructions (making sure to install in the **Default Directory**, and during installation if asked "Do you want to keep this file" always click **Yes**).
2. **SIGN-UP** to receive an email when a newer version becomes available by clicking on the **UPDATE NOTICES** page of [www.DigiTelSoftware.com](http://www.DigiTelSoftware.com)
3. **PLUG-IN** your IN-USB2 or IN-USB1 USB Foot Pedal to your pc's USB Port and wait one minute for its Drivers to automatically install, or plug-in your IN-DB9 Serial Foot Pedal to your pc's Serial Port.

If you are using an IN-DB9 Serial Foot Pedal with a Serial-To-USB-Converter, install the Converter's Driver from its Installation mini-CD or from your Pedal Magic Installation CD. Then connect the IN-DB9 to the Converter and the Converter to your pc's USB Port.

4. **RUN** PedalMagic from Windows Start, All Programs menu. It will run for a free trial period without a License Key so you can begin to use it right away. When you purchase a PedalMagic License Key, you will receive a POP (Proof-Of-Purchase) Number that will be on the Installation CD's label or on an Invoice or Email. **To receive your PedalMagic License Key, email your POP Number plus the Lock Number shown in PedalMagic's Registration menu to [Keys@DigiTelSoftware.com](mailto:Keys@DigiTelSoftware.com)**
5. **OPEN** PedalMagic's **Toolbox** and set the Pedal Type, then set the desired Hot-Key functions for each Pedal's Press or Release for the Application that you want to control.